



This installation guide applies to these part n°/descriptions:

1512 0000 T5 – Snorkel for engine with 103 kW

1512 0001 T5 – Snorkel for engine with 132 kW

Reference value for installation:	5,0 hours
-----------------------------------	-----------



## Important

To ensure proper function and optimal quality of our parts, their installation must be done in accordance with this installation guide and according to Volkswagen manufacture's specifications in a professional workshop. SEIKEL GmbH and its employees shall not be responsible for damage and its consequences of any nature, which are caused due to non-observance or ignorance of these guidelines. Warranties shall be void for incorrectly performed installations.

## SEIKEL warranty certificate through product registration

When you purchase and install a SEIKEL product, you need a warranty certificate so that we can cover costs in the event of a warranty claim. You can download this warranty certificate from our website at [www.seikel.de/downloads](http://www.seikel.de/downloads). Please fill out the form and return it to us by e-mail or fax. This is the only way to ensure that we can cover the costs in the event of a warranty or guarantee claim.

The certificate is valid for both – commercial and private customers.

## Installation instructions

The exact working steps as well as tightening torques are to be taken from the instructions of the respective vehicle manufacturer. In case of deviations, our specifications of Seikel GmbH apply.

## NOTE!

All the drill holes and breakthroughs must be deburred from both the sides. Metal swarfs are to be removed / vacuumed up immediately, and it has to be ensured that no swarfs fall into the hollow space in the body!

Apply paint (as per current valid Volkswagen repair manual "Paint", refer to ELSA):

1. Apply wash primer and allow it to dry in accordance with the item description. A hot-air dryer can be used, if necessary. We recommend: 1k Wash primer LLS MAX 106 M2.
2. Apply filler and allow it to dry in accordance with the item description. A hot-air dryer can be used, if necessary. We recommend 2K-HS filler LLS MAX 202 M2.
3. Apply base coat on visible areas based on the vehicle-specific varnish and allow base coat to dry in accordance with the item description. A hot-air dryer can be used, if necessary.
4. Protect all cutting edges, hollow spaces or drill holes additionally with anti-corrosion wax, if required using a small brush. We recommend transparent preservative wax AKR 321 M 15 4.



Scope of delivery for 103 kW engine



Scope of delivery for 132 kW engine

### Parts list - for left-hand drive vehicles:

- 1x pipe long
- 1x pipe short
- 1x snorkel pipe
- 1x suction head
- 3x bind rivet
- 6x hex nut M6, self-locking
- 6x lens head screw M6x20
- 1x cylinder head screw M6x16
- 7x flat washers
- 1x rivet nut M6
- 1x clip
- 2x hose clamps 80-100 mm
- 1x hose clamp 100-120 mm
- 1x suction pipe, pre-assembled
- 1x clamping section
- 1x drill template for air feed-through



### Special tool

- Rivet nut pliers



### Best practise

Dismount wheel and inner wing on the right.



Dismount left and right wiper arms, waterbox cover and waterbox sheet.



Mask the fender with adhesive tape to avoid scratches. Place the drill template for the air feed-through on the fender and align to the outline of the fender and fix.

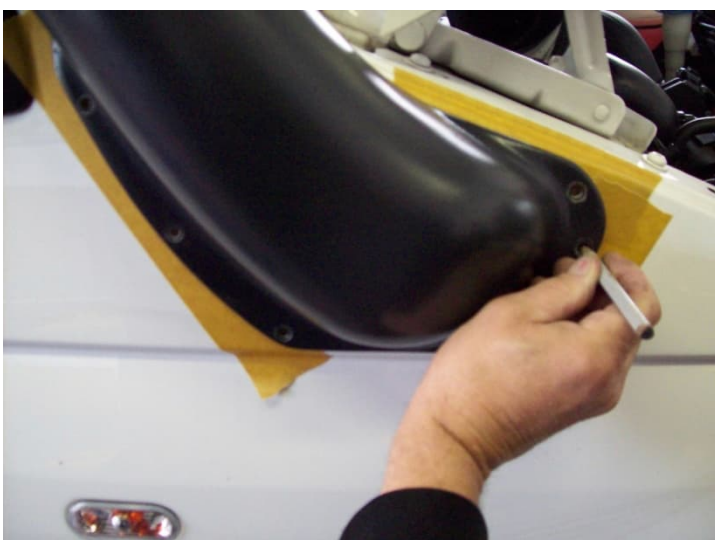




Mark the big section for the air feed-through on the fender, drill in the centre and extend to Ø 110 mm. Also cut identical hole from the partition panel behind the fender, as seen in the image.



Deburr both the sections internally and externally.



Join snorkel pipe and mark screw drill holes. Then drill the marked points to 7 mm.



Mask A-pillar with adhesive tape.

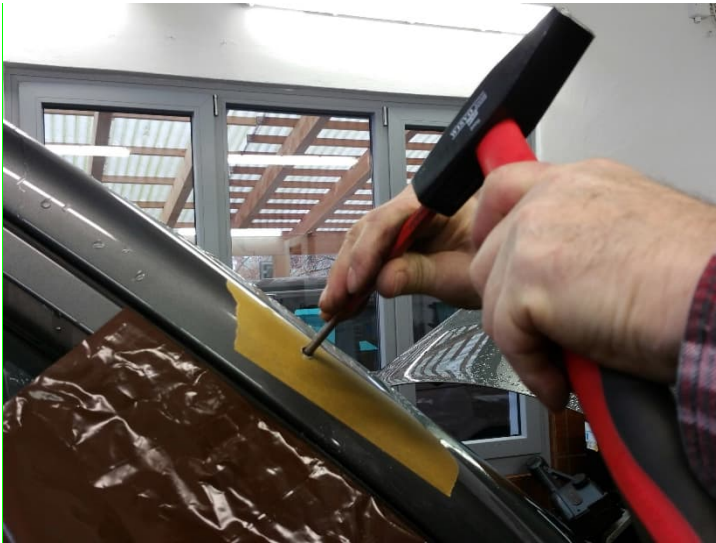


Align snorkel pipe to fender and temporarily mount using lens head screws M6x20 and 6 M6 nuts.



Press the snorkel pipe on the A-pillar and using a long 8 mm drill machine, drill through the already drilled hole in the air intake pipe in the A-pillar.





Remove the snorkel pipe again and with a drift punch, shape the inside panel of the A-pillar to the point where there is enough ease of operation for inserting the rivet nut.



Deburr all edges, remove drilling chips and swarfs and treat against rust, as specified on page 2.



Insert rivet nut M6 in the A-pillar using rivet nut pliers.



Deburr all edges, remove drilling chips and swarfs and treat against rust, as specified on page 21.



Insert the cylinder head screw M6x16 in the drill hole in snorkel pipe from inside and attach the snorkel pipe to the vehicle.



Fix the snorkel pipe to the fender using 6 lens head screws M6x20 and 6 collar nuts M6.  
Tighten all 7 screws hand tight.



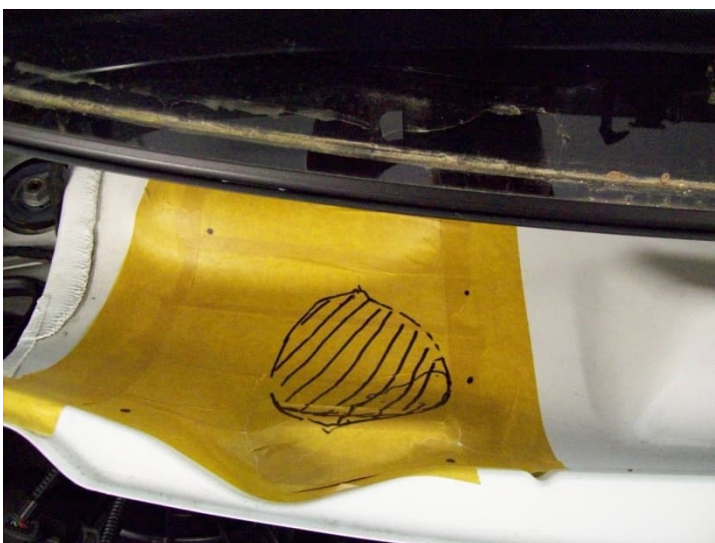


Rivet suction head with the snorkel pipe.

Close the hole in snorkel pipe for fixing on to A pipe using the clip provided.



Clean the area to be treated in waterbox and mask. Align mounting plate of the lead-through in waterbox and fix.



Mark drill positions and lead-through.



Make fixing holes and breakthrough from the rear edge in the fixing drill holes and treat with anti-corrosive protection, as per specifications on page 2.



Apply body-adhesive to the air pipe.



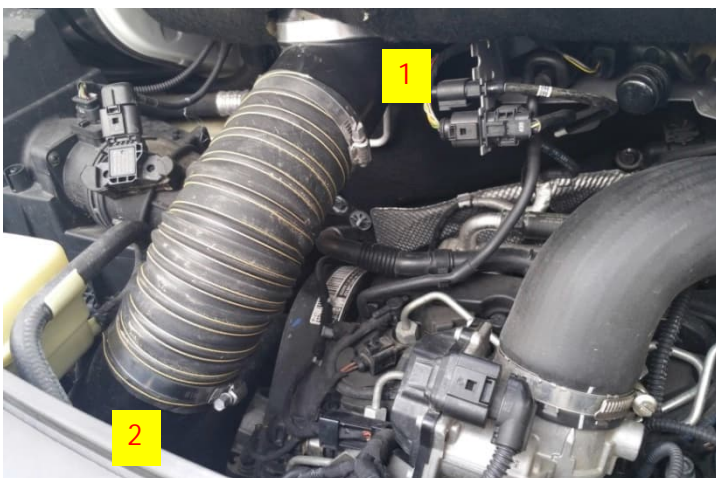


Fix the air pipe, glue and screw with body.



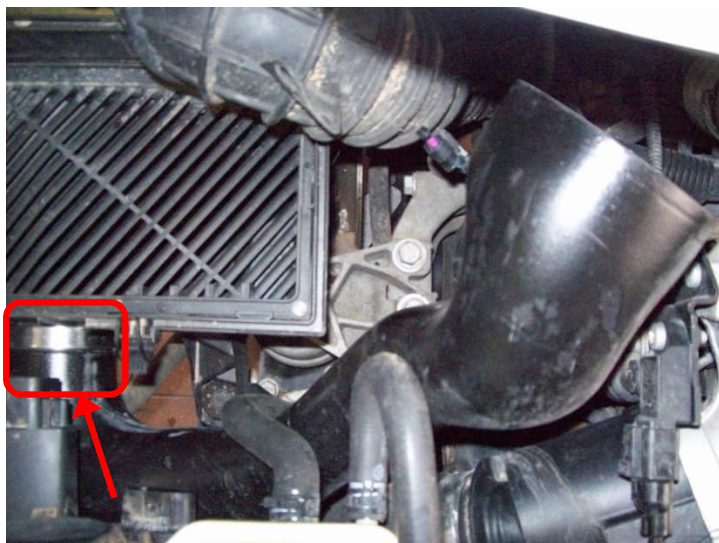
### Installation situation 103 kW engine

Dismount air filter upper part and filter element. Dismount original suction pipe. Attach the suction pipe provided in the delivery to the air filter bottom part using hose clamp provided in the delivery.



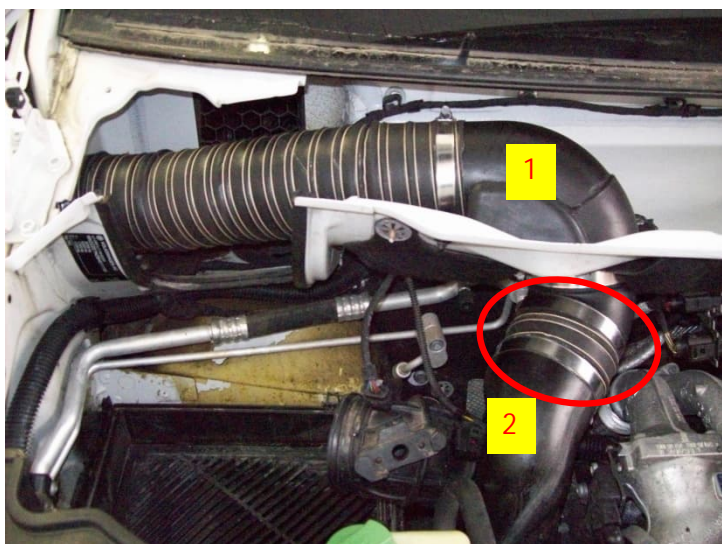
Align elbow piece to the waterbox duct (1). Fix the connection pipe provided in the delivery between elbow piece and suction pipe (2) and fasten with the hose clamps provided in the delivery. (Adjust the length of the pipe, if required).





### Installation situation 132 kW engine

Dismount air filter upper part and filter element. Dismount original suction pipe. Attach the suction pipe provided in the delivery to the air filter bottom part using hose clamp provided in the delivery.



Align elbow piece to the waterbox duct (1). Fix the connection pipe provided in the delivery between elbow piece and suction pipe (2) and fasten with the hose clamps provided in the delivery. (Adjust the length of the pipe, if required).



Re-assemble waterbox sheet, waterbox cover and wiper arms on the left and right.

#### Note:

Then align the suction head on snorkel backwards!

Volkswagen guidelines for warranty.